



Turner Uni-Drive

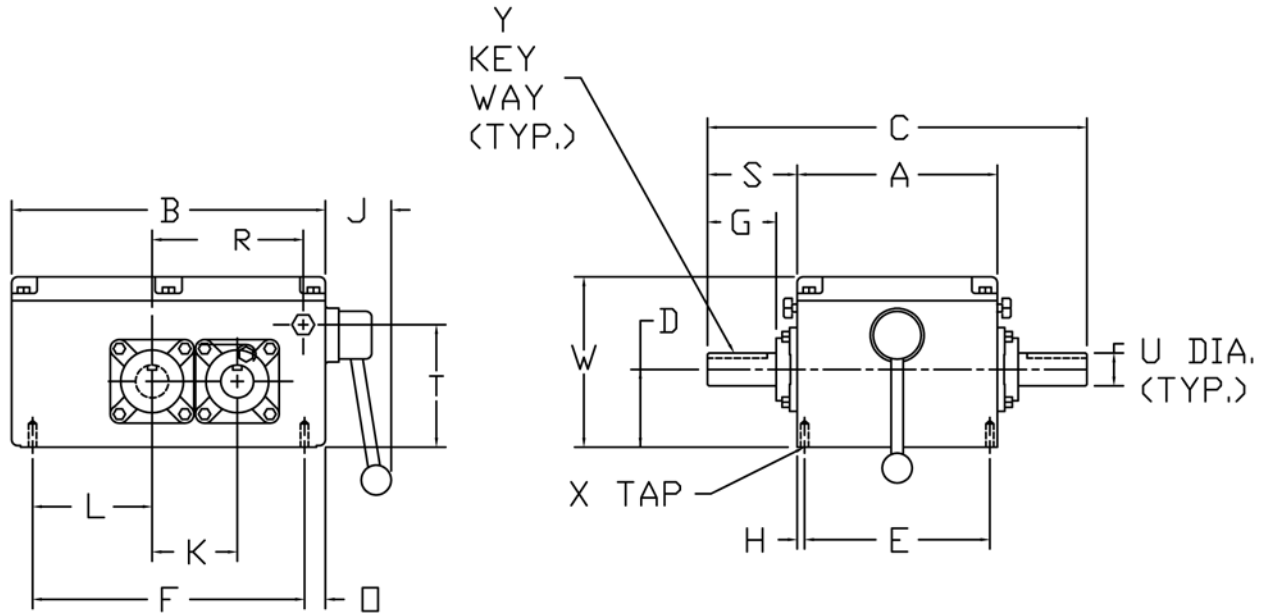
X5MG - MANUAL SHIFT

Ratio range 1.00 - 2.00 : 1
Torque Capacity - 2220 in-lbs (Manual)

2 speed with manual shift
Off-the-shelf components for all ratios

Approx. Weight 150 lbs

DIMENSIONS



Hinged Motor Plate and Mounting Base available as Optional Accessories.
Contact TURNER UNI-DRIVE for Dimensions.

A	B	C	D	E	F	G	H	J	K
8 3/8	13 1/8	15 7/8	3.25	7 3/4	11 3/8	2 7/8	5/16	2 3/4	3.563

L	□	R	S	T	U	W	X	Y
4 1/8	7/8	7	3 3/4	5 19/32	1.375	7 1/8	3/8-16 THD X 5/8 DEEP	3/8 X 3/16 X 2 5/8