



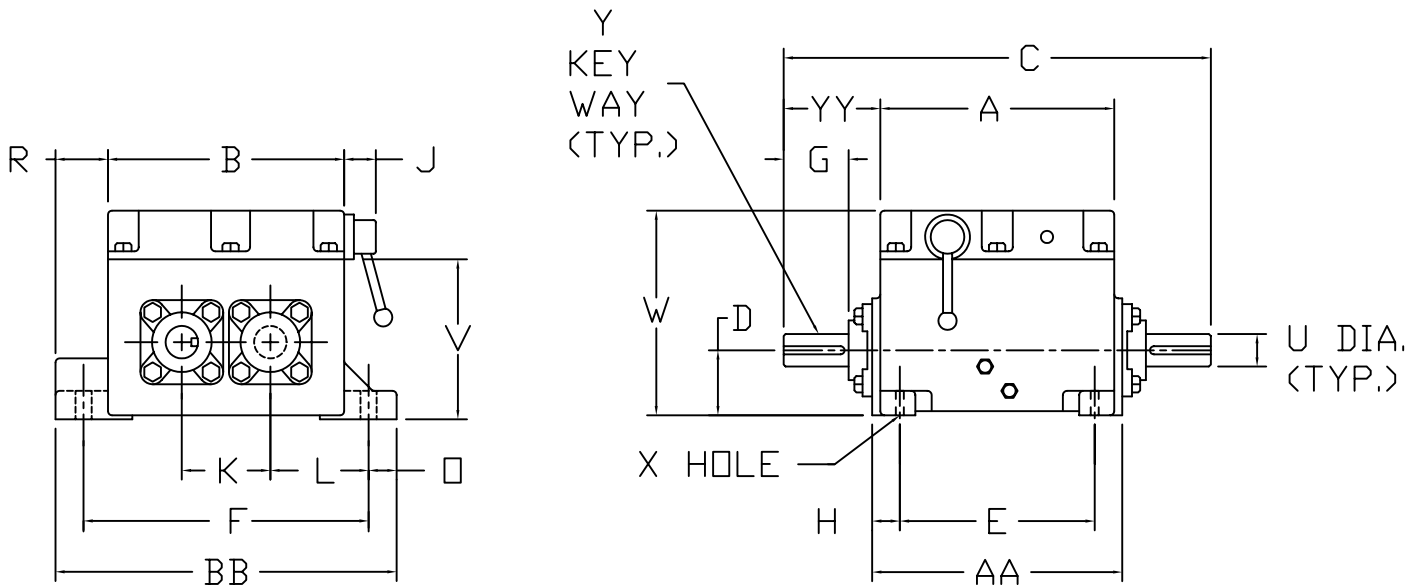
Turner Uni-Drive

52M — Manual Shift

Ratio range 1.00 - 2.00 : 1
 Torque Capacity - 7240 in-lbs (Standard Gears)
 10860 in-lbs (Special Gears)
 Approx. Weight 365 lbs

2 or 3 speeds with manual shift
 2 speed with pneumatic shift
 Off-the-shelf components for all ratios
 Available with reversing ratios

DIMENSIONS



Hinged Motor Plate and Mounting Base available as Optional Accessories.
 Contact TURNER UNI-DRIVE for Dimensions.

A	B	C	D	E	F	G	H	J	K	L
21 1/4	14 3/8	33 1/2	4.750	16 3/4	17 1/8	5	2 1/4	2 1/8	5.000	6 1/16
□	R	U	V	W	X	Y				
1 1/8	2 1/2	2.250	8 7/8	13 5/16	7/8 DIA	1/2 X 1/4 X 4 1/2				
AA	BB	YY								
21 1/4	19 3/8	6 1/8								

DIMENSIONS ARE IN INCHES AND ARE NOT TO BE USED FOR CONSTRUCTION UNLESS CERTIFIED